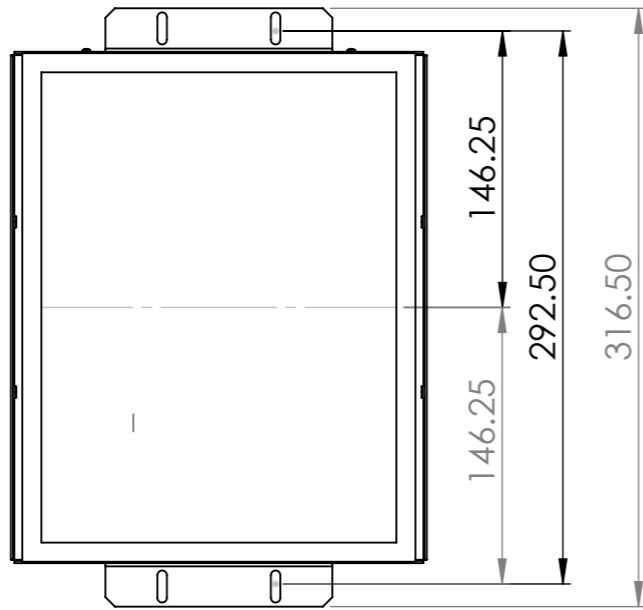
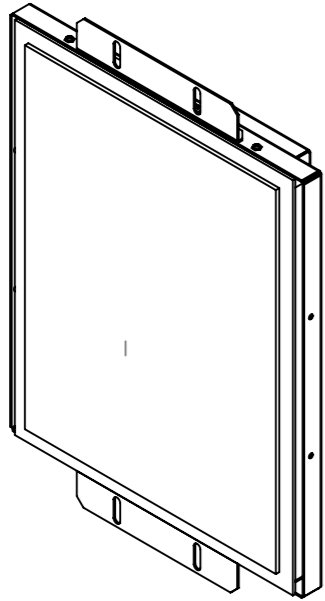
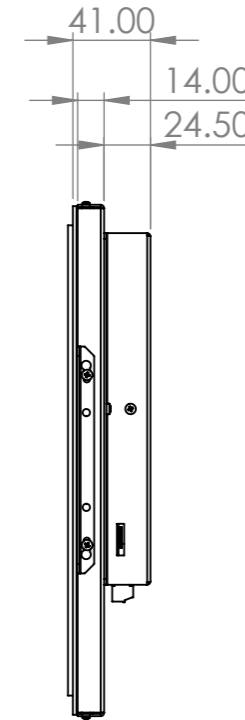
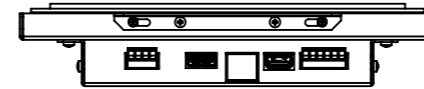
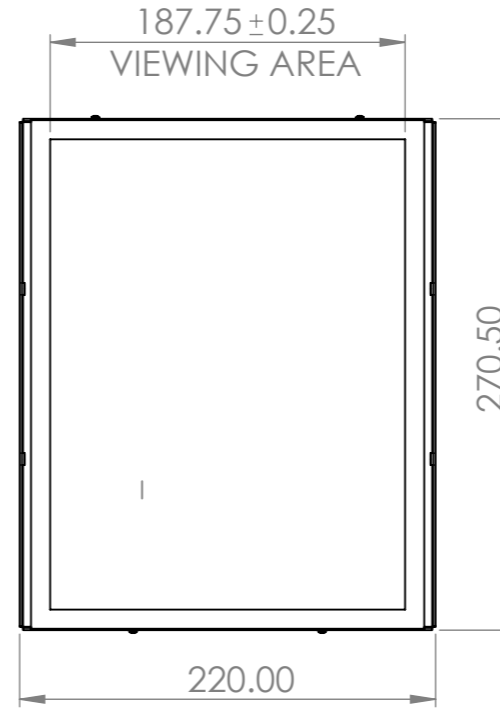
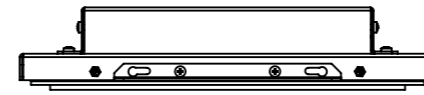
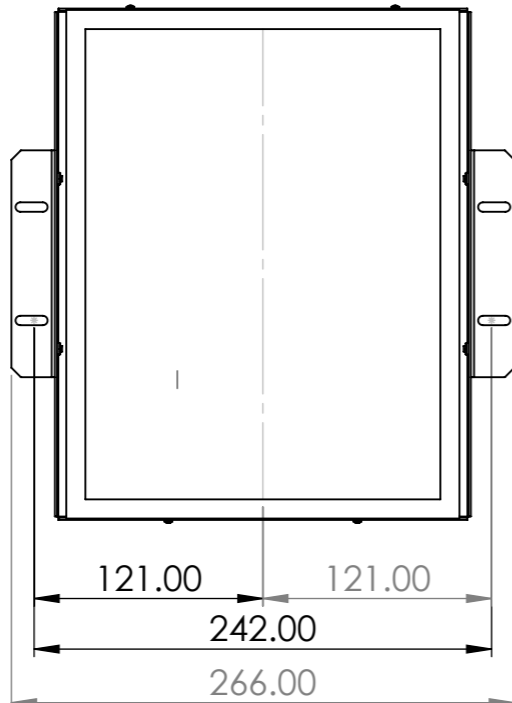
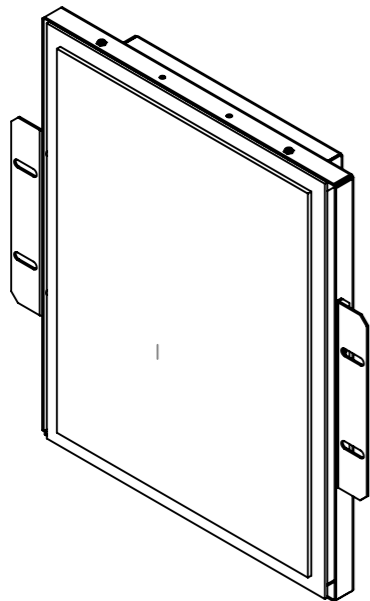


MOUNTINGS

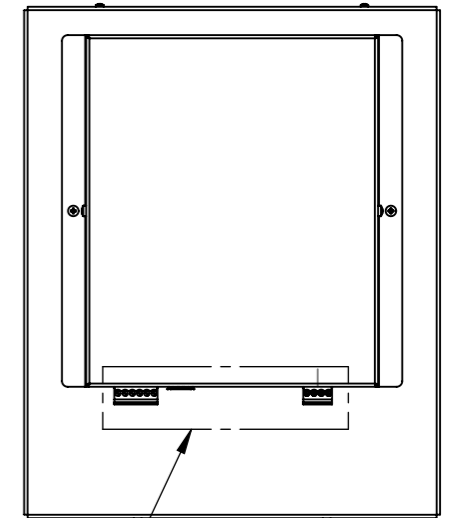
OPTION 1



OPTION 2



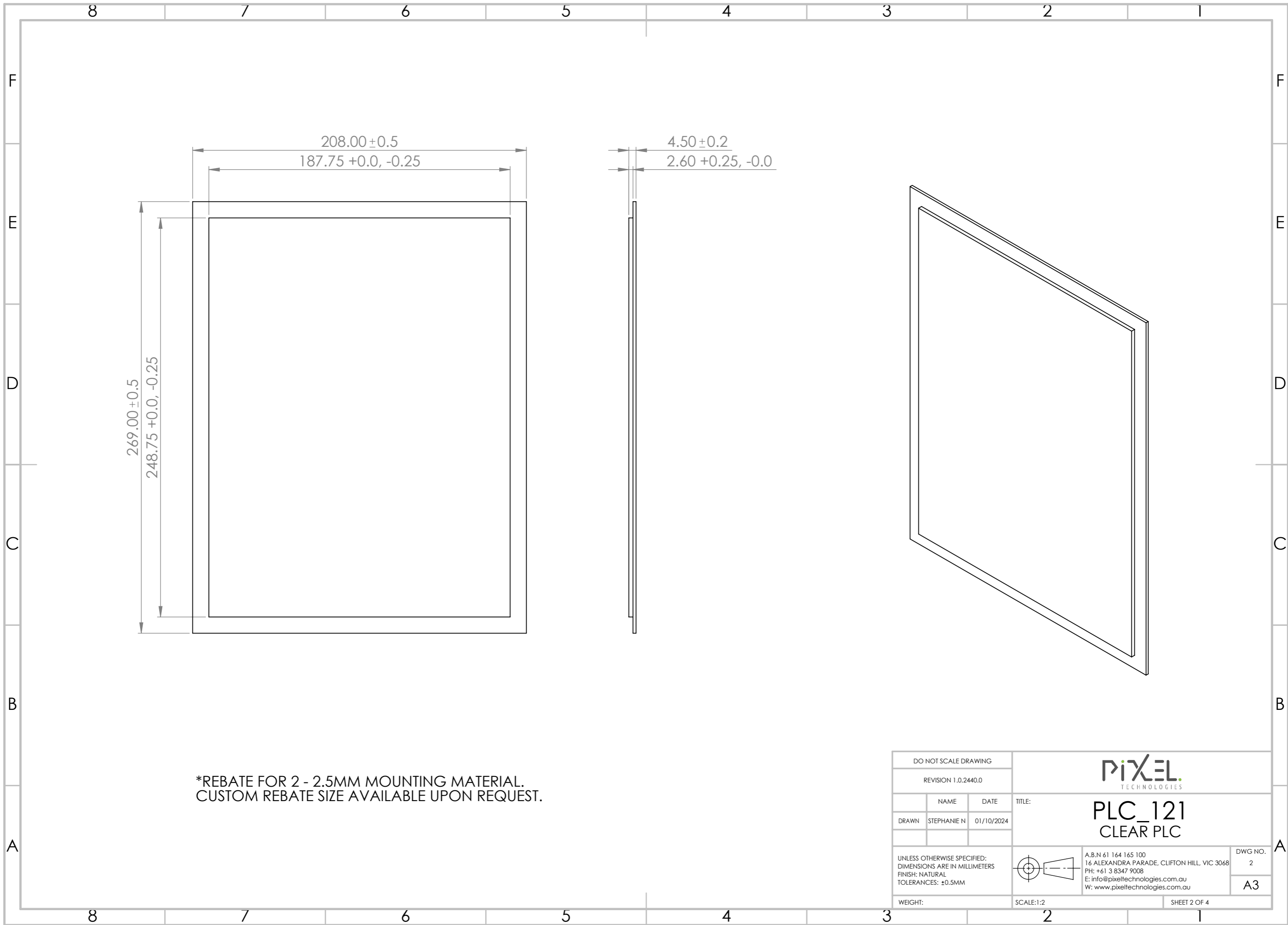
REAR VIEW




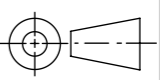
CABLE ENTRY

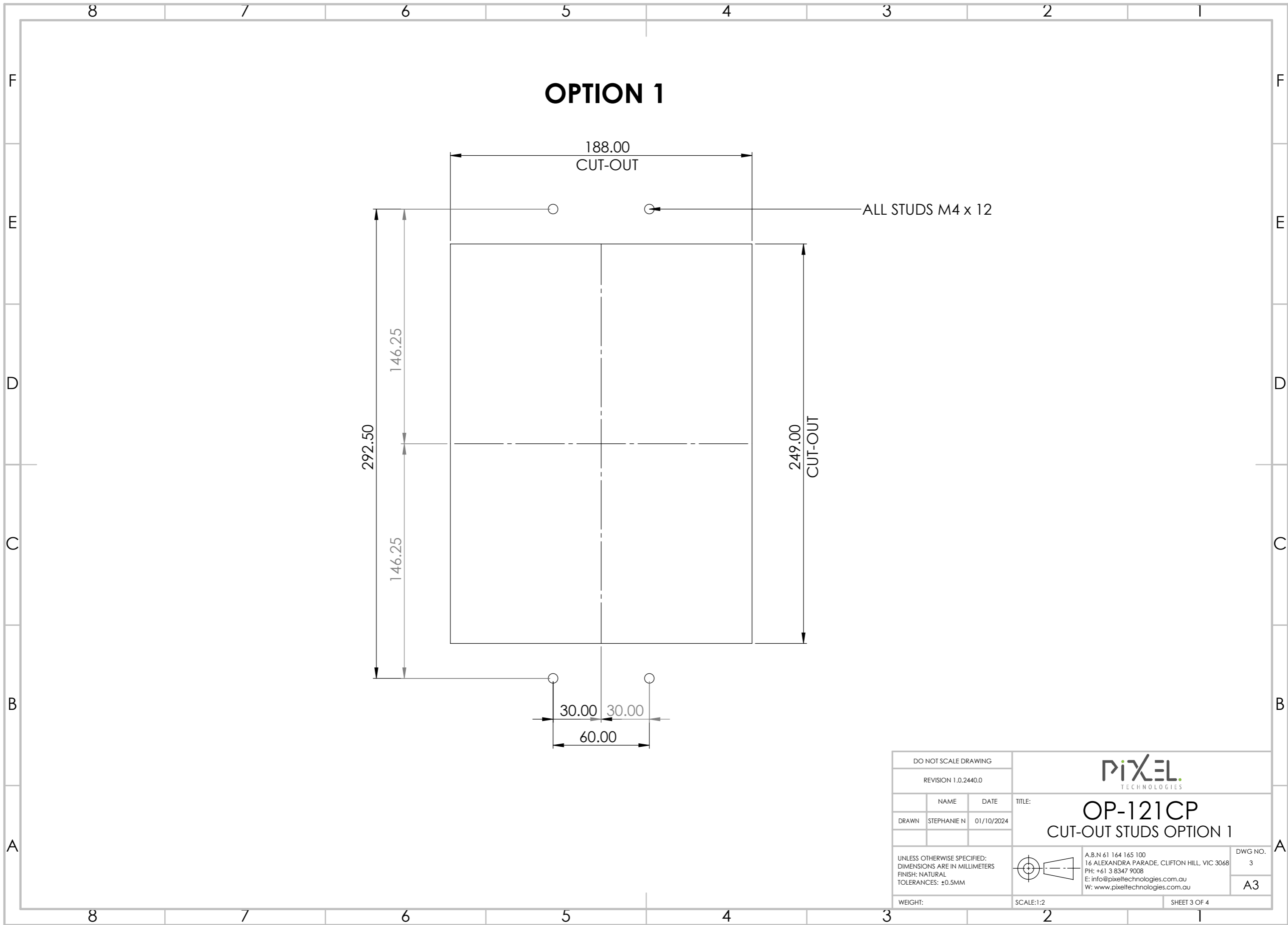
INCLUDES FRONT LENS
WITH PN:
PLC_121

| | | | | | |
|---|-------------|------------|--|---|--------------------------------------|
| DO NOT SCALE DRAWING | | | | TITLE: | OP-121CP DIMENSION DRAWING |
| REVISION 1.0.2440.0 | | | | | |
| DRAWN | STEPHANIE N | 01/10/2024 | | A.B.N 61 164 165 100 16 ALEXANDRA PARADE, CLIFTON HILL, VIC 3068 PH: +61 3 8347 9008 E: info@pixeltechnologies.com.au W: www.pixeltechnologies.com.au | |
| UNLESS OTHERWISE SPECIFIED: DIMENSIONS ARE IN MILLIMETERS FINISH: NATURAL TOLERANCES: ±0.5MM | | | | DWG NO. | 1 |
| WEIGHT: | | | | SCALE: | 1:4 |



*REBATE FOR 2 - 2.5MM MOUNTING MATERIAL.
 CUSTOM REBATE SIZE AVAILABLE UPON REQUEST.

| | | | | |
|---|------------|---|---|---------------------------|
| DO NOT SCALE DRAWING | |  | | |
| REVISION 1.0.2440.0 | | | | |
| NAME | DATE | TITLE: PLC_121 CLEAR PLC | | |
| DRAWN: STEPHANIE N | 01/10/2024 | | | |
| UNLESS OTHERWISE SPECIFIED: DIMENSIONS ARE IN MILLIMETERS FINISH: NATURAL TOLERANCES: ±0.5MM | |  | A.B.N 61 164 165 100 16 ALEXANDRA PARADE, CLIFTON HILL, VIC 3068 PH: +61 3 8347 9008 E: info@pixeltechnologies.com.au W: www.pixeltechnologies.com.au | DWG NO. 2 A3 |
| WEIGHT: | SCALE: 1:2 | | SHEET 2 OF 4 | |



OPTION 1

188.00
CUT-OUT

ALL STUDS M4 x 12

292.50


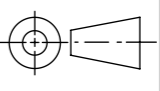
146.25

146.25

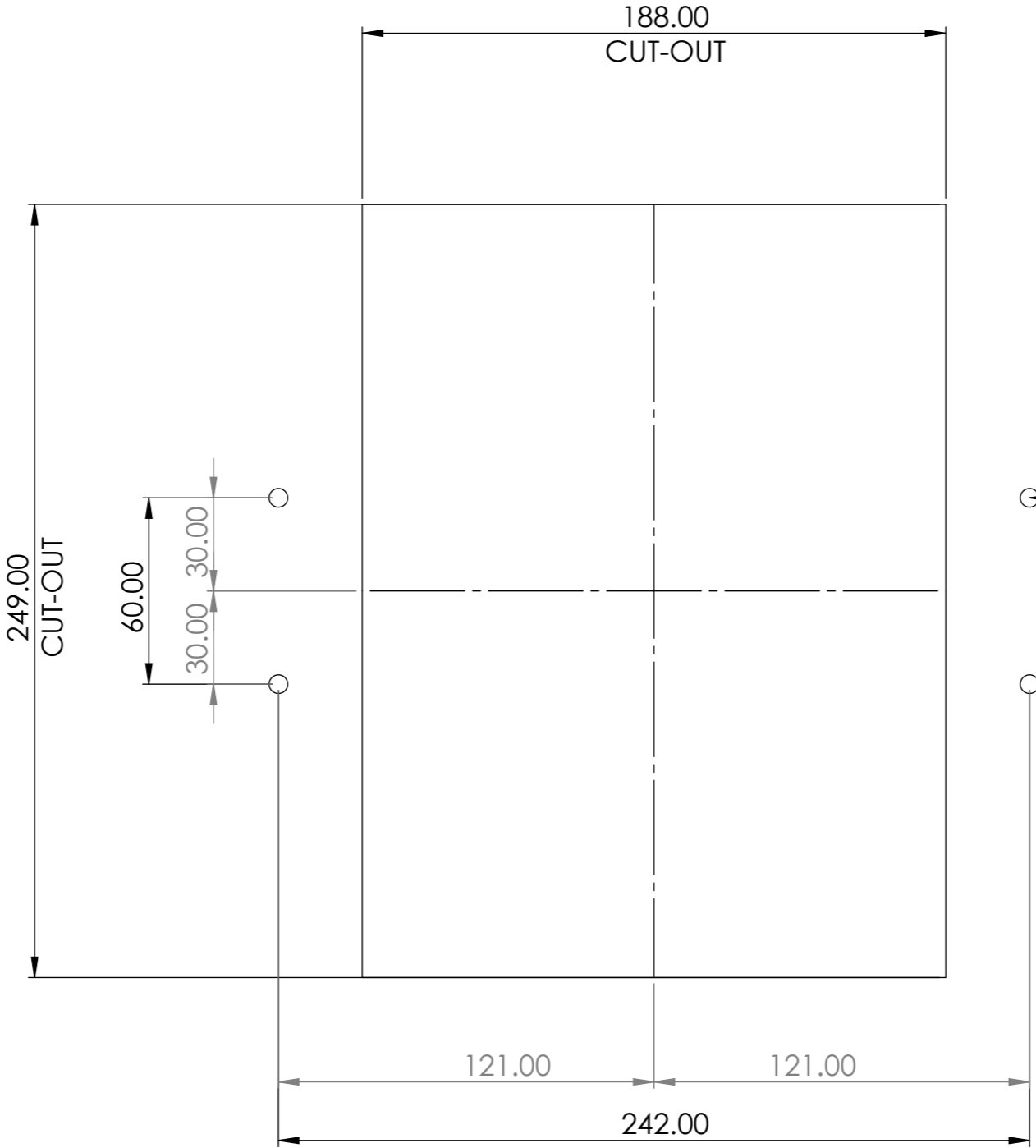
249.00
CUT-OUT

30.00 30.00

60.00

| | | | | |
|---|-------------|---|---|---------------------------|
| DO NOT SCALE DRAWING | |  | | |
| REVISION 1.0.2440.0 | | | | |
| NAME | DATE | TITLE: OP-121CP CUT-OUT STUDS OPTION 1 | | |
| DRAWN | STEPHANIE N | | | 01/10/2024 |
| UNLESS OTHERWISE SPECIFIED: DIMENSIONS ARE IN MILLIMETERS FINISH: NATURAL TOLERANCES: ±0.5MM | |  | A.B.N 61 164 165 100 16 ALEXANDRA PARADE, CLIFTON HILL, VIC 3068 PH: +61 3 8347 9008 E: info@pixeltechnologies.com.au W: www.pixeltechnologies.com.au | DWG NO. 3 A3 |
| WEIGHT: | SCALE:1:2 | | SHEET 3 OF 4 | |

OPTION 2



← ALL STUDS M4 x 12

| | | | | |
|---|-------------|---|---|---------------------------|
| DO NOT SCALE DRAWING | | | | |
| REVISION 1.0.2440.0 | | | | |
| NAME | DATE | TITLE: OP-121CP CUT-OUT STUDS OPTION 2 | | |
| DRAWN | STEPHANIE N | | | 01/10/2024 |
| UNLESS OTHERWISE SPECIFIED: DIMENSIONS ARE IN MILLIMETERS FINISH: NATURAL TOLERANCES: ±0.5MM | | | A.B.N 61 164 165 100 16 ALEXANDRA PARADE, CLIFTON HILL, VIC 3068 PH: +61 3 8347 9008 E: info@pixeltechnologies.com.au W: www.pixeltechnologies.com.au | DWG NO. 4 A3 |
| WEIGHT: | SCALE:1:2 | | SHEET 4 OF 4 | |