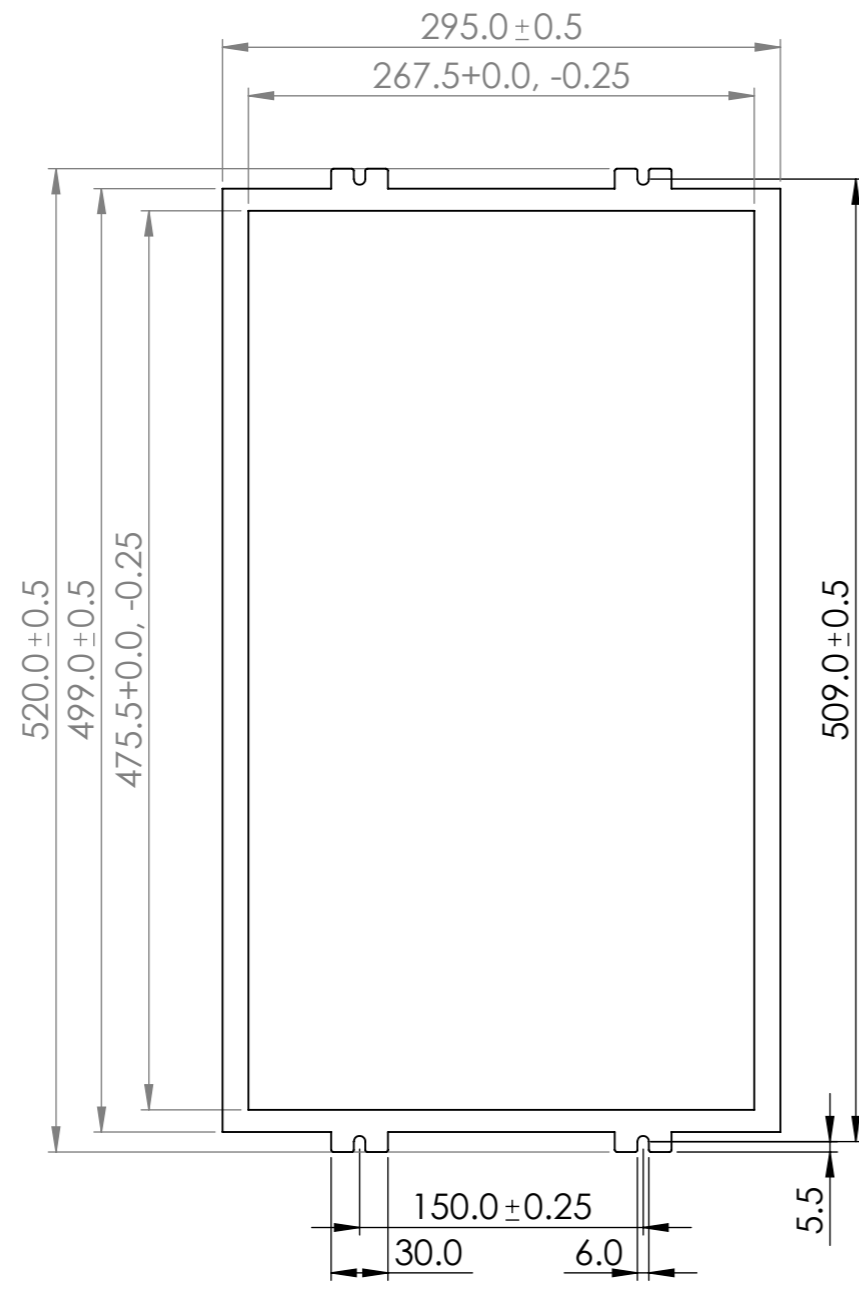


295.0 ± 0.5
 268.0 ± 0.25 (V.A.)
 499.0 ± 0.5
 476.0 ± 0.25 (V.A.)
 511.5 (MOUNTING)
 30.0
 150.0 (MOUNTING)

REAR VIEW
 40.2 ± 0.5
 37.2 ± 0.5
 498.6 ± 0.5
 520.0 ± 0.5
 CABLE ENTRY

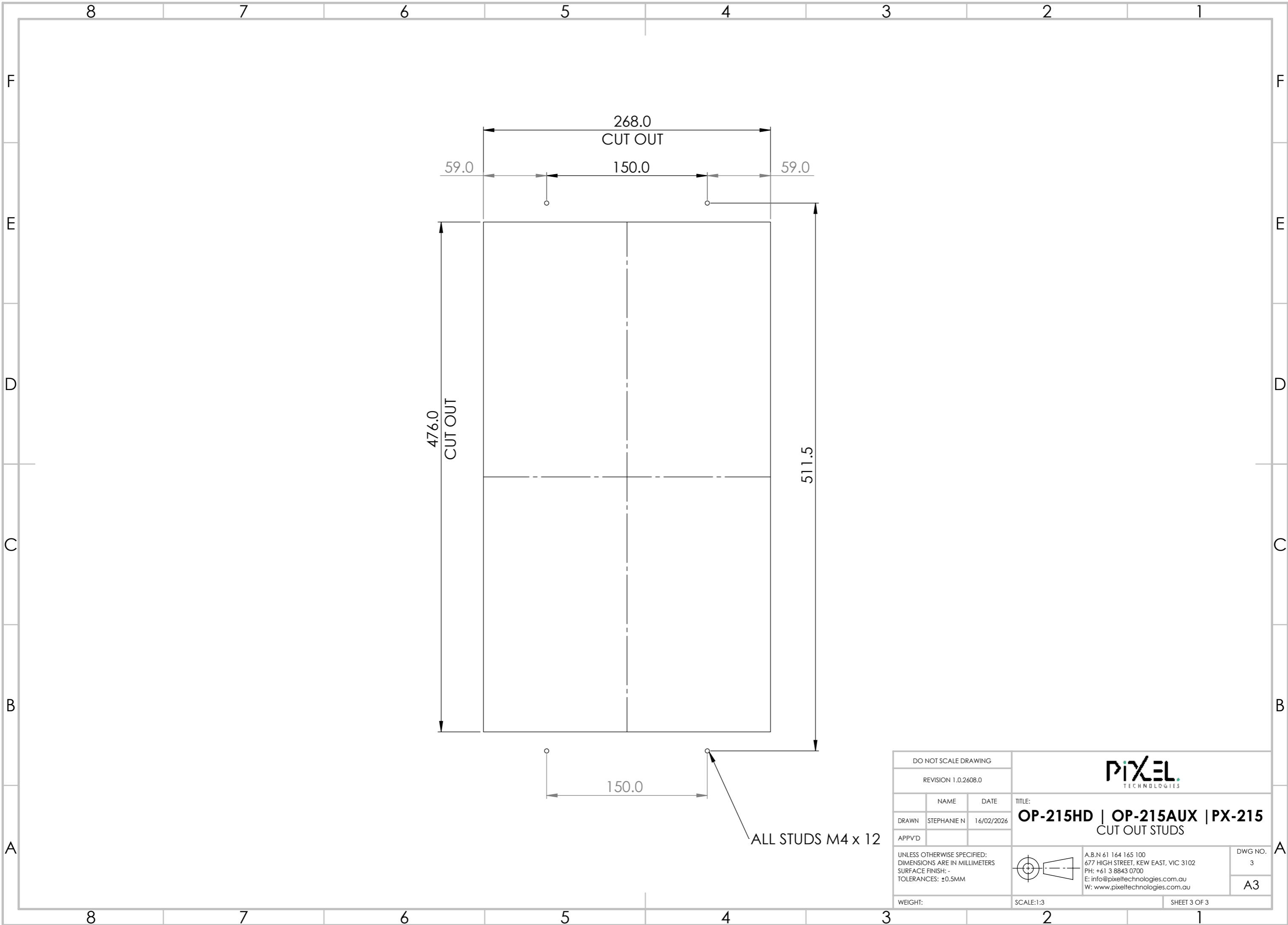
POLYCARBONATE LENS:
PLC_215HD [2.1]
 For Size Illustration Purposes, Sold Separately**
 TO RETROFIT OLDER DISPLAY MODEL MOUNTING
 KIT REQUIRED:
OP-BKT
 Sold Separately**


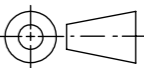
| | | | |
|----------------------|------------|---|--------------------|
| DO NOT SCALE DRAWING | | | |
| REVISION 1.0.2608.0 | | | |
| NAME | DATE | TITLE: | |
| DRAWN: STEPHANIE N | 16/02/2026 | OP-215HD OP-215AUX PX-215 DIMENSION DRAWING | |
| APPV'D | | UNLESS OTHERWISE SPECIFIED: DIMENSIONS ARE IN MILLIMETERS SURFACE FINISH: MATTE TOLERANCES: ± 0.5 MM | |
| WEIGHT: | | A.B.N 61 164 165 100 677 HIGH STREET, KEW EAST, VIC 3102 PH: +61 3 8843 0700 E: info@pixeltechnologies.com.au W: www.pixeltechnologies.com.au | DWG NO. 1 A3 |
| | | SCALE: 1:4 | SHEET 1 OF 3 |



*REBATE FOR 2 - 3MM MOUNTING MATERIAL.
CUSTOM REBATE SIZE AVAILABLE UPON REQUEST.

| | | | |
|---|-------------|------------|---|
| DO NOT SCALE DRAWING | | | |
| REVISION 1.0.2608.0 | | | |
| | NAME | DATE | TITLE: |
| DRAWN | STEPHANIE N | 16/02/2026 | PLC_215HD [2.1] CLEAR PLC |
| APPV'D | | | |
| UNLESS OTHERWISE SPECIFIED: DIMENSIONS ARE IN MILLIMETERS MATERIAL: 6MM CLEAR POLYCARB SURFACE FINISH: NATURAL TOLERANCES: ± 0.5 MM | | | A.B.N 61 164 165 100 677 HIGH STREET, KEW EAST, VIC 3102 PH: +61 3 8843 0700 E: info@pixeltechnologies.com.au W: www.pixeltechnologies.com.au |
| WEIGHT: | SCALE: 1:4 | | DWG NO. 2 |
| | | | A3 |
| | | | SHEET 2 OF 3 |



| | | | | |
|---|-------------|------------|---|---|
| DO NOT SCALE DRAWING | | |  | |
| REVISION 1.0.2608.0 | | | | |
| | NAME | DATE | TITLE: | |
| DRAWN | STEPHANIE N | 16/02/2026 | OP-215HD OP-215AUX PX-215 CUT OUT STUDS | |
| APPV'D | | | | |
| UNLESS OTHERWISE SPECIFIED: DIMENSIONS ARE IN MILLIMETERS SURFACE FINISH: - TOLERANCES: ±0.5MM | | |  | A.B.N 61 164 165 100 677 HIGH STREET, KEW EAST, VIC 3102 PH: +61 3 8843 0700 E: info@pixeltechnologies.com.au W: www.pixeltechnologies.com.au |
| WEIGHT: | | | | SCALE:1:3 |
| | | | SHEET 3 OF 3 | |