

Overview	1
Getting Started	2
Specifications	3
Support	4

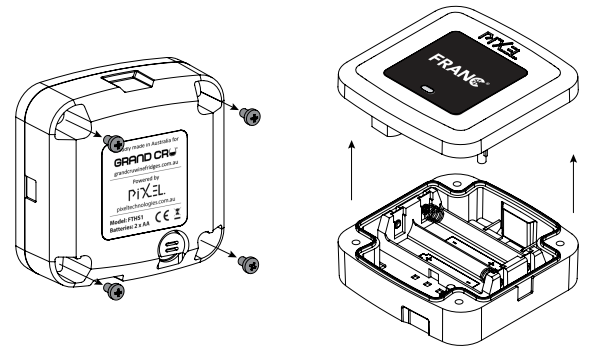
Overview 1

- ① All pictures and illustrations are not to scale.
- ② Device should automatically start once batteries are inserted.
- ③ Mounting bracket is optional. Recommended to use 1xM3 Self Tapper Pan Head Screw for mounting.



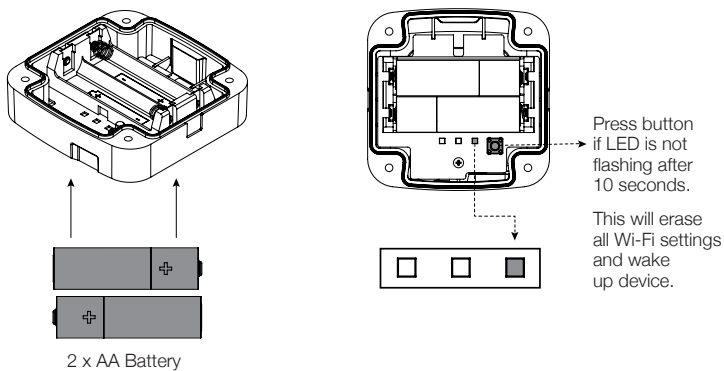
Getting Started 2

- ① Unscrew & open enclosure



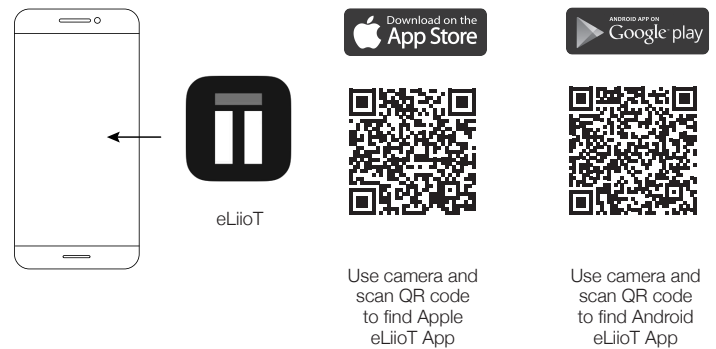
Getting Started 2

- ② Insert Batteries
- ③ Check hot spot Wi-Fi activated



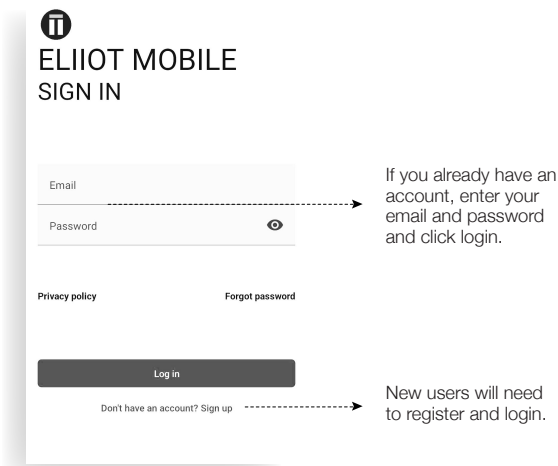
Getting Started 2

- ④ Download the eLioT App from the Apple or Android Store.

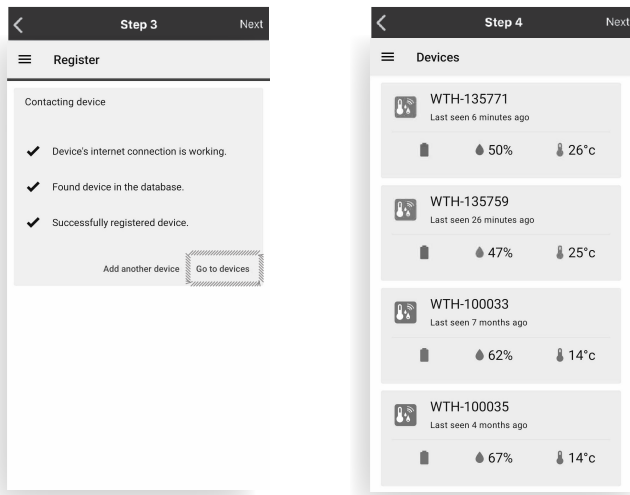


Getting Started 2

5 Register device

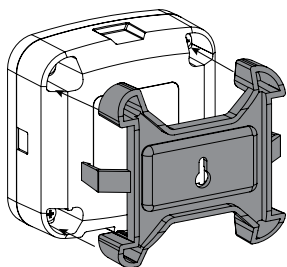


Getting Started 2

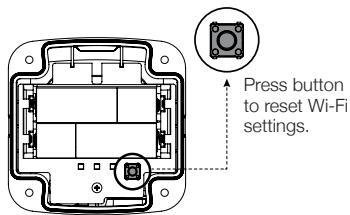


Getting Started 2

9 Mounting option

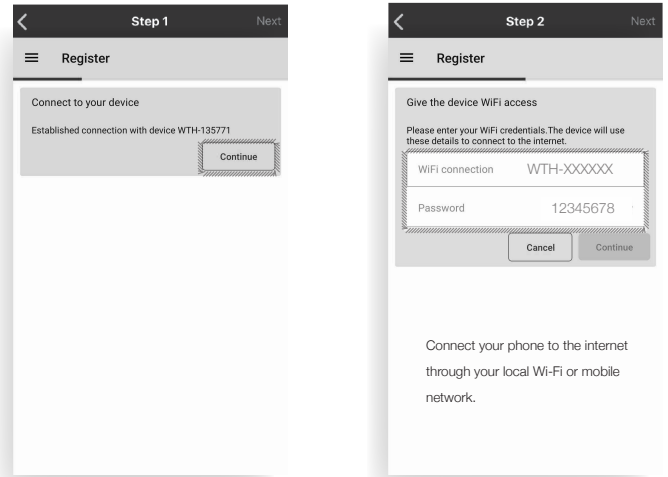


10 Factory reset



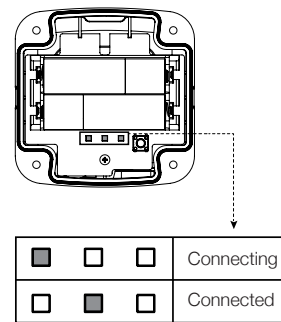
Getting Started 2

6 Device connection



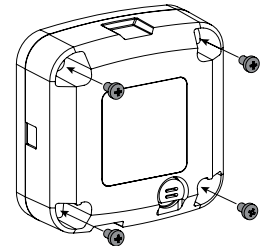
Getting Started 2

7 Check device



*LED's will turn off to conserve power.

8 Close & screw enclosure



Specifications 3

Model Number	FTHS1
Batteries	2 x AA Energizer Lithium EA91 1.5V (1 year lifetime)
Temperature Accuracy	+/- 0.4° C (max), -10 to 85° C
Humidity Accuracy	+/- 4% RH (max), 0-80% RH
Operating Range	-40° to +60° C, 0-100% RH
Dimensions (mm)	(W)72 x (L)72 x (D)29 (With mounting)
IP Rating	IP67

Battery Temperature Warning:

Battery lifetime and operating temperature are directly related to the batteries used. Energizer EA91 are rated from -40° to 60°C, however full battery capacity is not achievable at very low temperatures (<-20°C). Refer to battery manufacturers data sheet for full information.

Battery Lifetime: Expected lifetime is calculated based on 30 second temperature samples, reported to the cloud each hour.

Proudly manufactured in Australia.